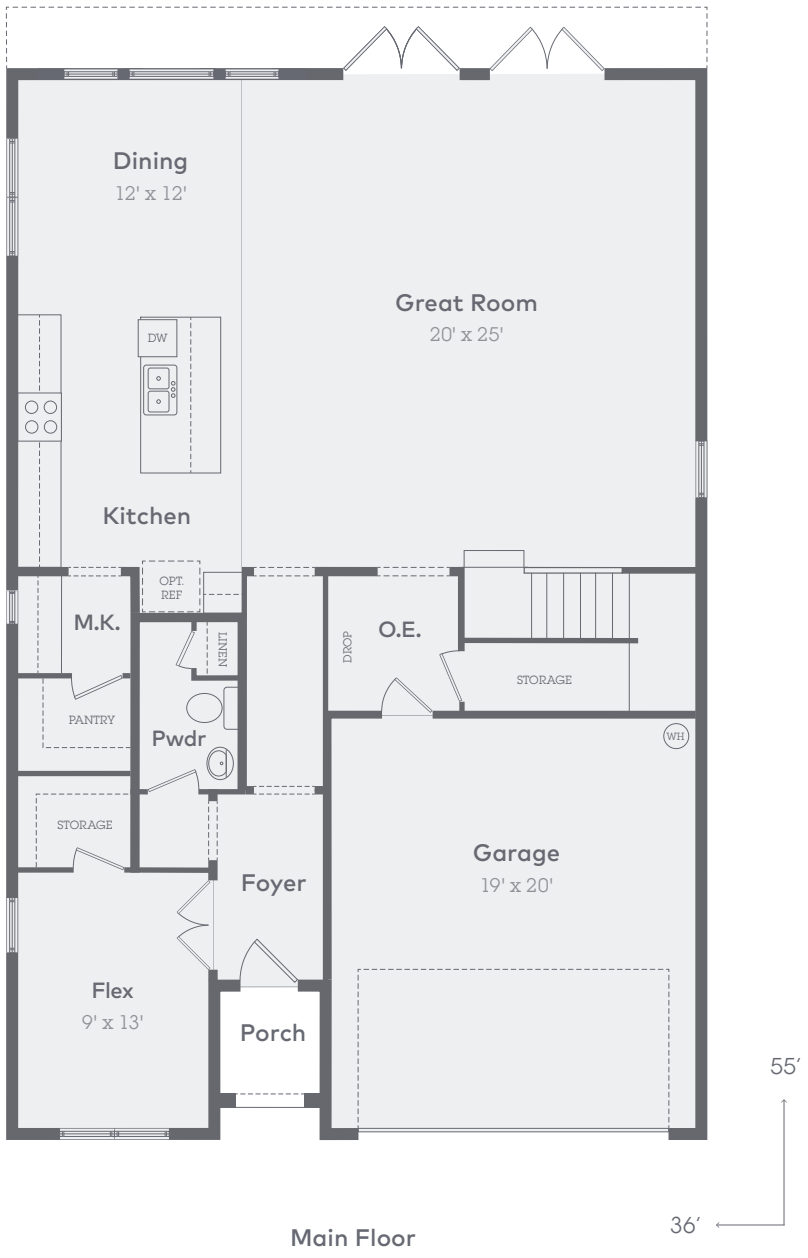


**3108 W Nassau Street**

3,322 Sq. Ft.

4 Bed | 3.5 Bath | 2 Car



Main Floor

55'

36'

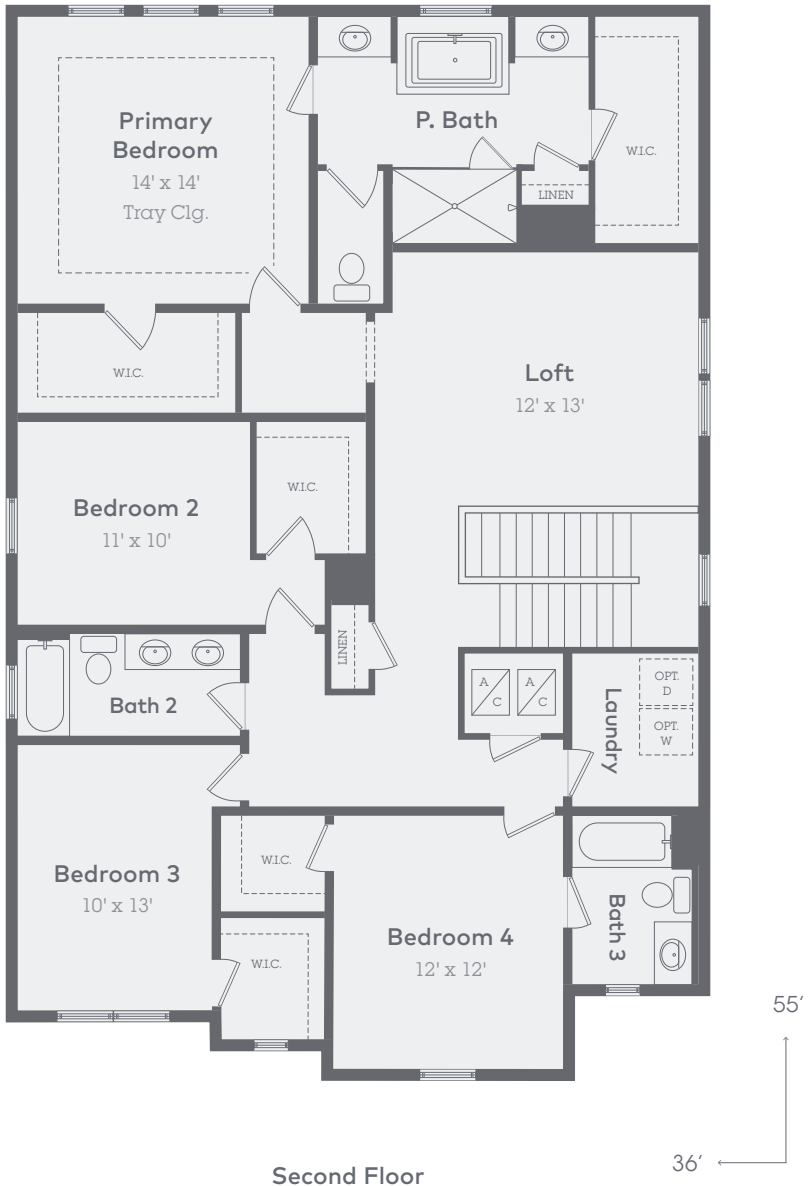
*Note: All dimensions are approximate and subject to fluctuate in construction. All options, windows and doors are subject to change.*

# 3108 W Nassau Street

Second Floor

3,322 Sq. Ft.

4 Bed | 3.5 Bath | 2 Car



Note: All dimensions are approximate and subject to fluctuate in construction. All options, windows and doors are subject to change.

## 3108 W Nassau Street

3,322 Sq. Ft.

4 Bed | 3.5 Bath | 2 Car

### TUDOR



### Structural Features

1. Tray Ceiling in Primary Room
2. Picture Window in Dining Room
3. 10 Foot Ceilings on First Floor
4. 50 Amp Pool Spa Prewire
5. Laundry Tub Pre-Plumbing in Laundry Room
6. Utility Sink Pre-Plumbing In Garage
7. Water Softener Loop & Drain Pre-Plumbing

*Note: All dimensions are approximate and subject to fluctuate in construction. All options, windows and doors are subject to change.*